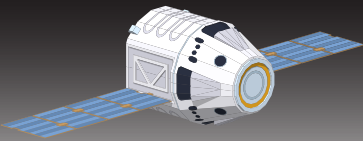




Saturn is **BEYOND** the earth.



The *satellite* is **ABOVE** the earth.



The *balloon* is **BELOW** the satellite.

WHAT IS A PREPOSITION?

It's a word or word set that relates a noun or a pronoun to another word in the sentence by giving information about direction, place or time. Common Prepositions:

across
after
among

around
behind
beneath

inside
into
near

over
under
with

PREPOSITIONS

m middlebury
INTERACTIVE LANGUAGES

WE are TEACHERS
www.weareteachers.com



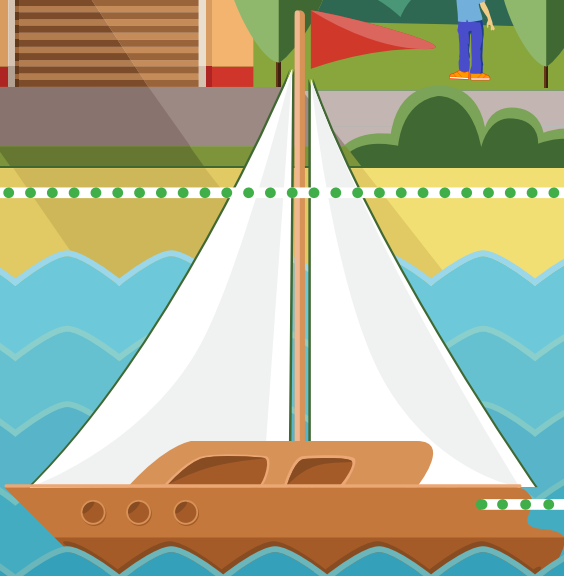
The *climber* is **ON** the mountain.



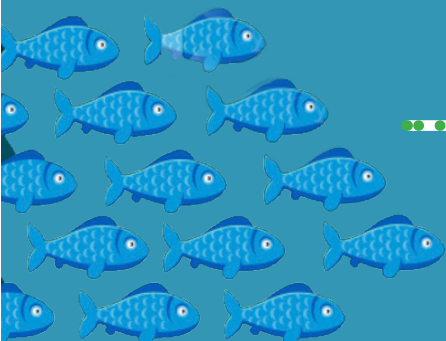
The *house* is **BETWEEN** the mountains and the bay.



The *kids* are playing **BY** the water's edge.



The *sailboat* is **IN** the water.



The *fish* are **UNDER** the water.