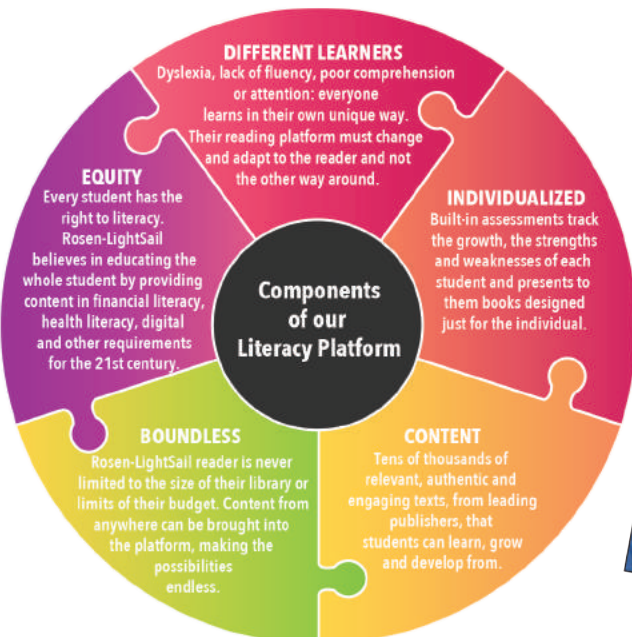


# Making Sense of What Matters

Rosen-LightSail uniquely combines technology to assist young readers by individualizing the reading experience to each and every student based on their ability. Then, we assist teachers and educators with 150 data points and real-time analytics on each student's strengths and areas requiring attention, all within a library of tens of thousands of engaging, authentic texts, including thousands of Spanish language books. Rosen-LightSail is a reading platform for all students. All of our complimentary texts are curated and State standard aligned to ensure student success.

The Rosen-LightSail platform personalizes the reading experience for every student by presenting the student with books in their just-right “zone of proximal development.” Once the student has selected a book that’s in the range to help them grow, the reader provides the tools and support to decode, focus and feel ownership of their reading development through a highly engaging gamified experience, all with real-time data charts.



Everyone learns differently, and Rosen-LightSail embraces that. Building on its foundation as an adaptive reading platform, Rosen-LightSail has developed a suite of features for dyslexic students or mind-wandering readers with the support and content designed to empower reading success and foster a lifelong love of reading for all.

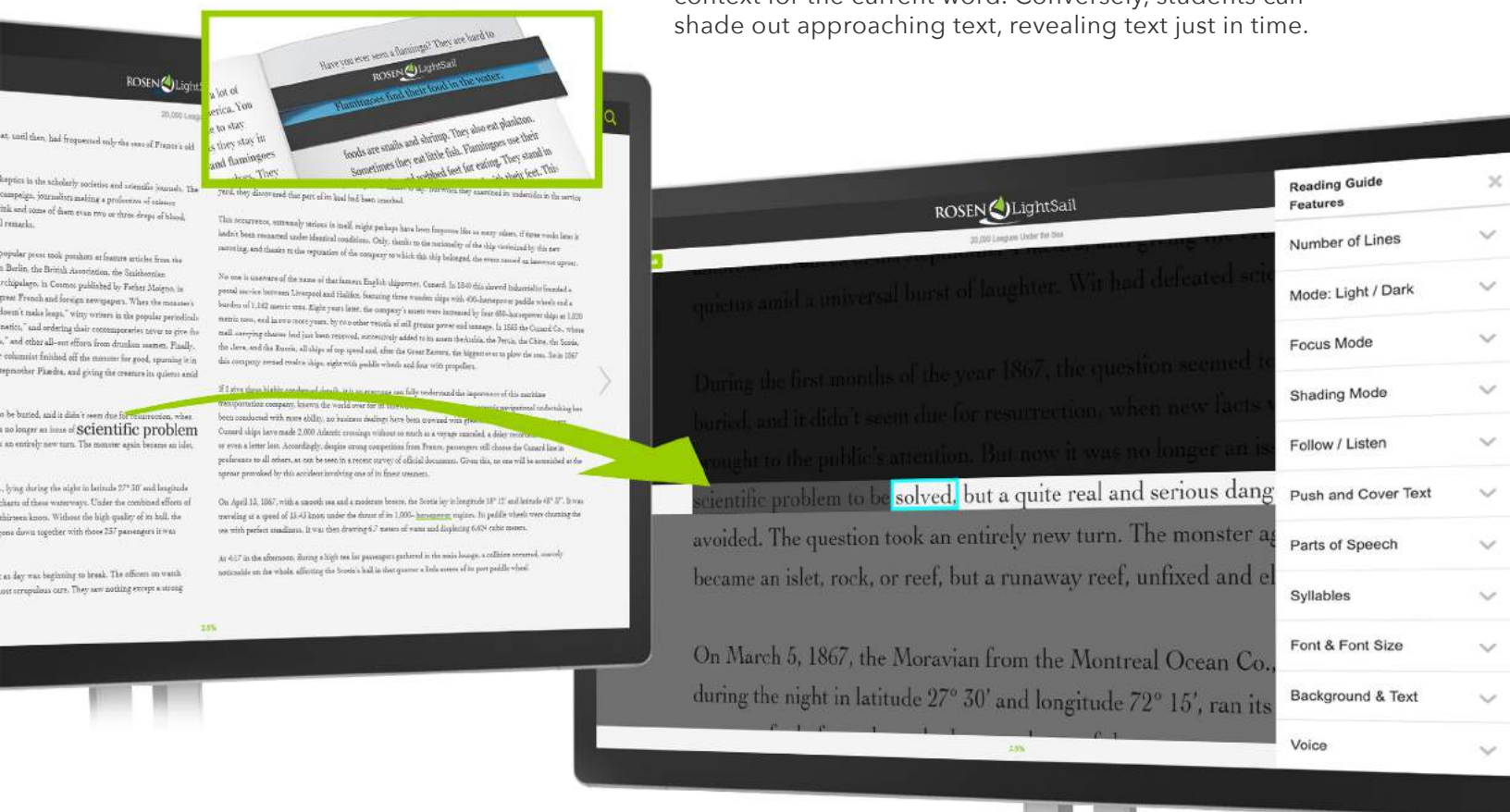
Please see the back page for some of the features.



# PERSONALIZE FOR STUDENTS

As a teacher, your primary objective is to provide an individualized and joyful learning experience for every child in your classroom. By using Rosen-LightSail's Personalized Reader Mode suite of features, you can increase your effectiveness as an educator by streamlining your efforts. The Personalized Reader Mode decreases time spent planning so you can be there for your students in the moment.

- Features of the Personalized Reader Mode can be adjusted discretely according to each student's needs and preferences, including font size and color. The Push to Cover reading feature shades out the last phrase read, supporting your students to remember context for the current word. Conversely, students can shade out approaching text, revealing text just in time.



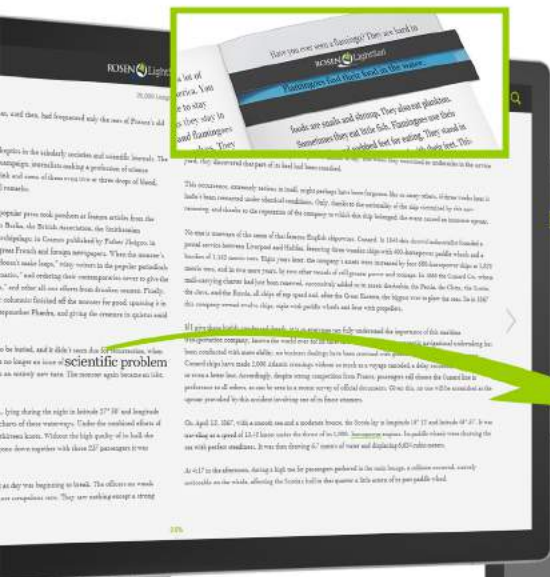
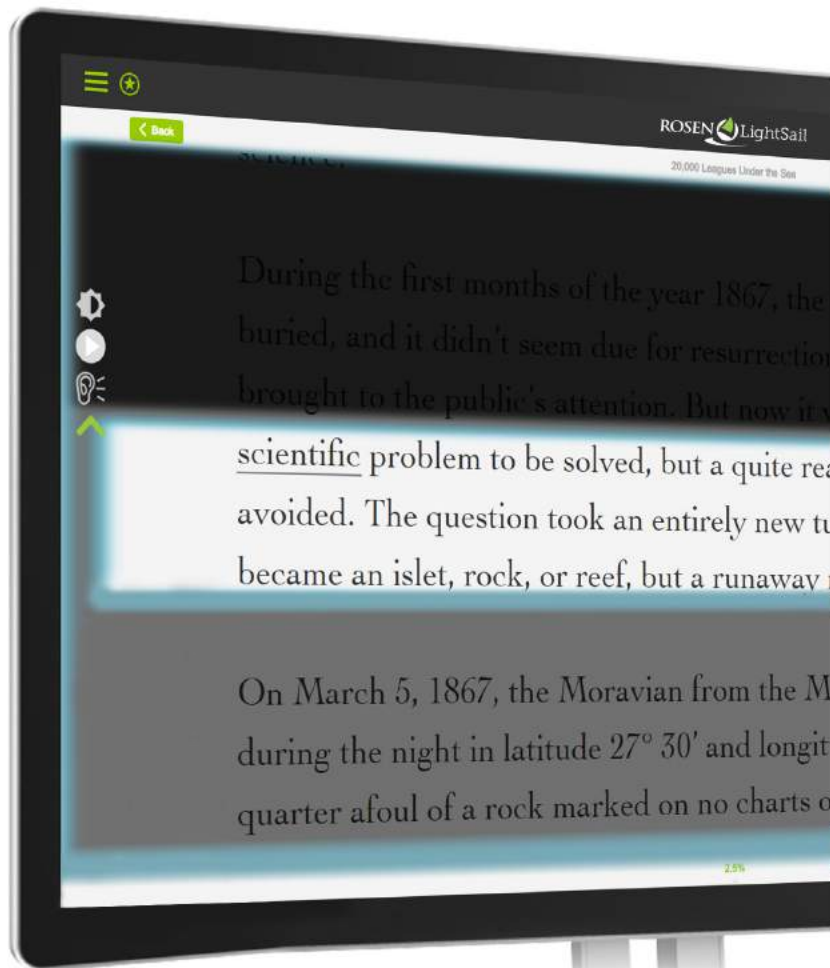
Rosen-LightSail's Personalized Reader Mode automatically and seamlessly highlights the text at the point of activation and enters the personalized reading mode, both decreasing distractions and increasing engagement with the text.



Adapt to the student's current attention level by allowing the student to switch between the one-, three-, or five-line view.



You can initiate Personalized Reader Mode on behalf of your students at any time. Students can also independently enter Personalized Reader Mode whenever they need to access extra accommodations.



Text to Speech allows your students to turn on the audiobook feature for unfamiliar words so that you can spend more time facilitating instructional groups and targeting your individualized efforts where they are most needed.

# PERSONALIZED READER MODE FEATURES

- Choose between viewing 1, 3, or 5 lines of text.
- Customize the text view by choosing the outline color or keeping a straight-edged white box.
- Control the shading of text above and below the text being read.
- Self correct by clicking a shortcut of going back 1, 3, or 5 words during the auto reading modes.
- Choose **Follow** and the student reads along, at their own pace, as the text is turned to a preferred color.
- Choose **Push and Cover** to:
  - block out text as it's being read, at student's pace;
  - uncover text at student's pace;
  - highlight only the word being read, blocking out the words before and after.
- Ability to read along as the text is read aloud at the student's pace.
- Choose among many anthropomorphic voices when using text to speech.
- Choose preferred font and font size, including the Dyslexie font.
- Adjust the spacing between words to fit reading comfort level.
- Supports dark mode.
- Customize the background and text color.
- Select any specific part of speech to be highlighted as student reads along.



# INDEPENDENT RESEARCH

**Independent research confirms that Rosen-Lightsail works!**

Reading just  
**30 minutes**  
a day on  
Rosen-LightSail  
leads to  
**3.9x gains.**

\*Rosen-LightSail partnered with John Hopkins School of Education to research the impact of reading minutes on students' Lexile® growth through Rosen-LightSail's SummerSail program.



Students overall were very positive about Rosen-LightSail: 82% of students indicated that Rosen-LightSail was easy to use and navigate.

72% responded that reading books on Rosen-LightSail was more enjoyable than reading printed books.\*

## EFFICACY STUDY

**17 High Need NYC DOE Middle School  
LEXILE GROWTH VS. DAILY READING MINUTES**

